

Support for parents while schools are closed



Check out these websites for help

General guidance on continuity of learning from home

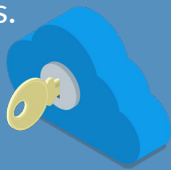
See [here](#) for a useful overview of how your child's school will help you and how you can support your child. See [here](#) for guidance at post-primary level.



The guidance is also available in multiple languages from the page above.

Ensuring safety online

If you have any concerns about your child's safety online, [webwise](#) provides excellent advice on how to minimise risks.



Resources relevant to the curriculum

Use the search engine on [scoilnet](#) to browse some of their 21,000 curriculum tagged resources.



Children with Special Education Needs

Contact the National Council for Special Education for guidance on the most relevant materials for your child, and have a look at their wide range of materials [here](#).



See [here](#) for details on the supplementary programme for primary and post-primary students.

Wellbeing supports

Updated resources and videos focused on you and your child's wellbeing have been developed by Department of Education psychologists and are available [here](#).



Traveller and Roma parents

Videos supporting parents in the Traveller and Roma communities can be found [here](#).

